



**MODEL UC50e**  
**PARTS MANUAL Rev 1.00A**



**DISTRIBUTED EXCLUSIVELY BY**  
**CMA DISHMACHINES**  
**12700 KNOTT AVENUE**  
**GARDEN GROVE, CALIFORNIA 92841**

**800-854-6417**  
**FAX 714-895-2141**

[www.cmadishmachines.com](http://www.cmadishmachines.com)



---

---

**TABLE OF CONTENTS**  
MODEL UC50E

**1. PARTS MANUAL .....3**

1.1. MECHANICAL DRAWINGS..... 3

    1.1.1. *General Body Parts* ..... 3

    1.1.2. *Lockup System* ..... 4

    1.1.3. *Control Panel* ..... 5

    1.1.4. *Control Components*..... 6

    1.1.5. *Solenoid Valve Group*..... 7

    1.1.6. *DVGW*..... 7

    1.1.7. *Rinse Aid Dispenser Group* ..... 8

    1.1.8. *Detergent Dispenser Group*..... 9

    1.1.9. *Boiler Group*..... 10

    1.1.10. *3 Ways Connection* ..... 11

    1.1.11. *Wash Pump*..... 12

    1.1.12. *Drain Pump Group*..... 13

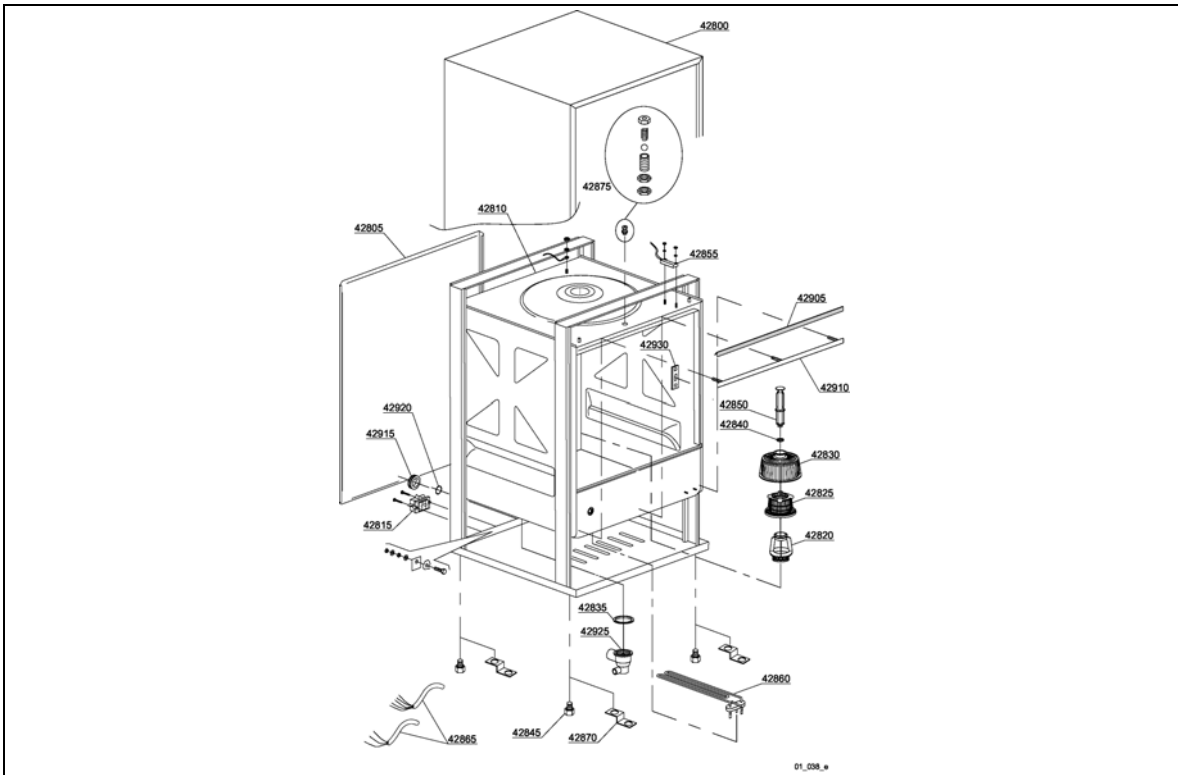
    1.1.13. *Pressure Switch Group*..... 13

    1.1.14. *Turret Group* ..... 14

# 1. Parts Manual

## 1.1. Mechanical Drawings

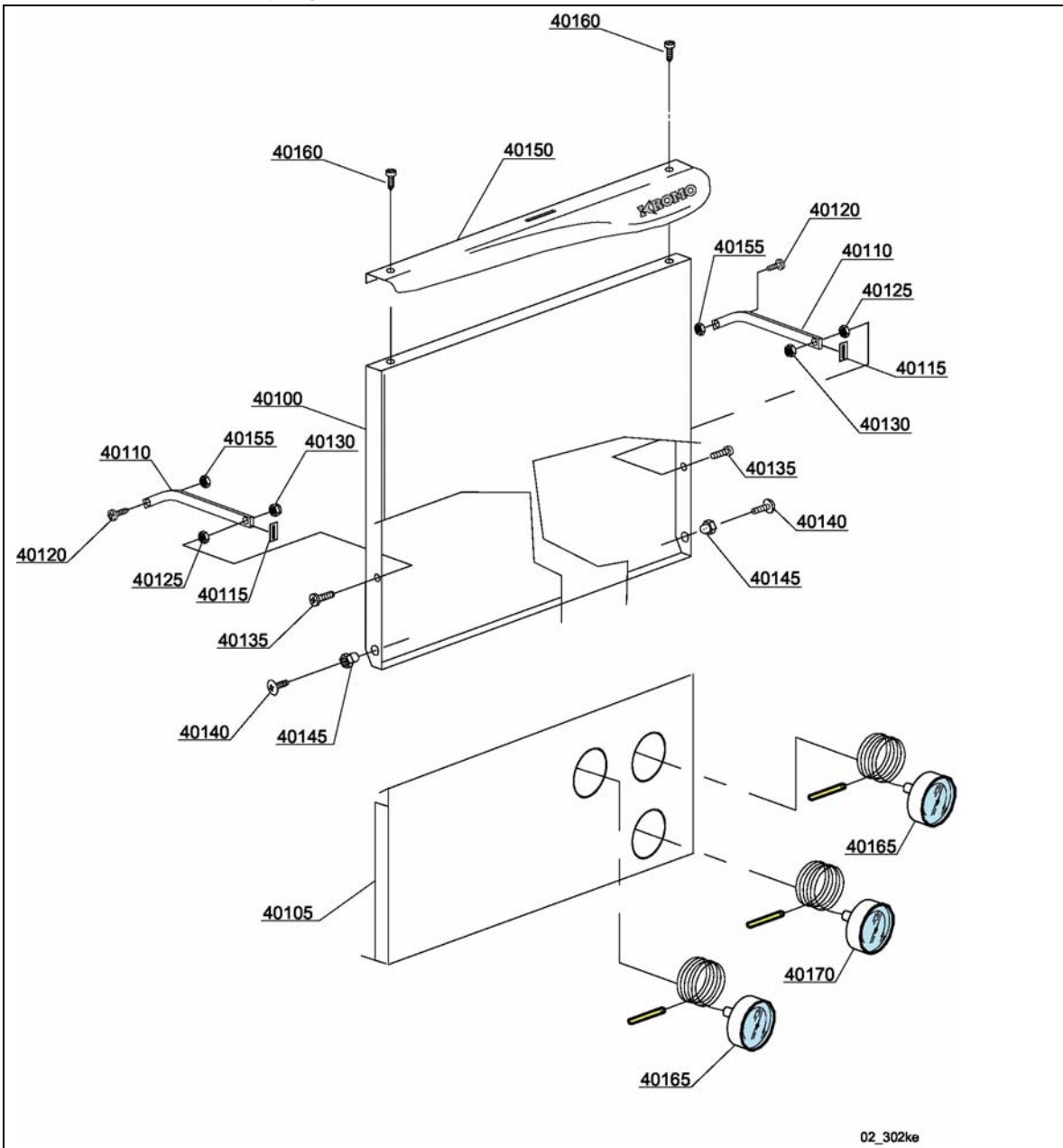
### 1.1.1. General Body Parts



ID	P- Code	DESCRIPTION
42800	510015	Cover
42805	510007	Back panel
42810	510000	Body
42815	15065/A	Cable-fastener with screw
42820	500607	Ferrule with filter
42825	500600	Internal filter with rack
42830	500616	Suction filter
42835	80208	95x75x3 O-ring minimum 2 pieces
42840	13021	DEM 40 O-ring minimum 2 pieces
42845	10851	High foot minimum 4 pieces
42850	500618	Overflow pipe

ID	P- Code	DESCRIPTION
42855	10819	Reed magnet (UL)
42860	15188	2700W 220V 1 F6lx26 Heating element
42865	15118	5x2,5x2500 cable
42865	151048	3x4x2500 cable
42875	10775	Door jack assembly
42905	510600	Door O-ring
42910	510014	Door O-ring angular
42915	13317	D.40mm unloading pipe pass min 2pcs
42920	13323	D.13mm dosing pipe pass min 2pcs
42925	500606	Right side scrap tray
42930	150401	Door rod slide (minimum 4 pieces)

1.1.2. Lockup System

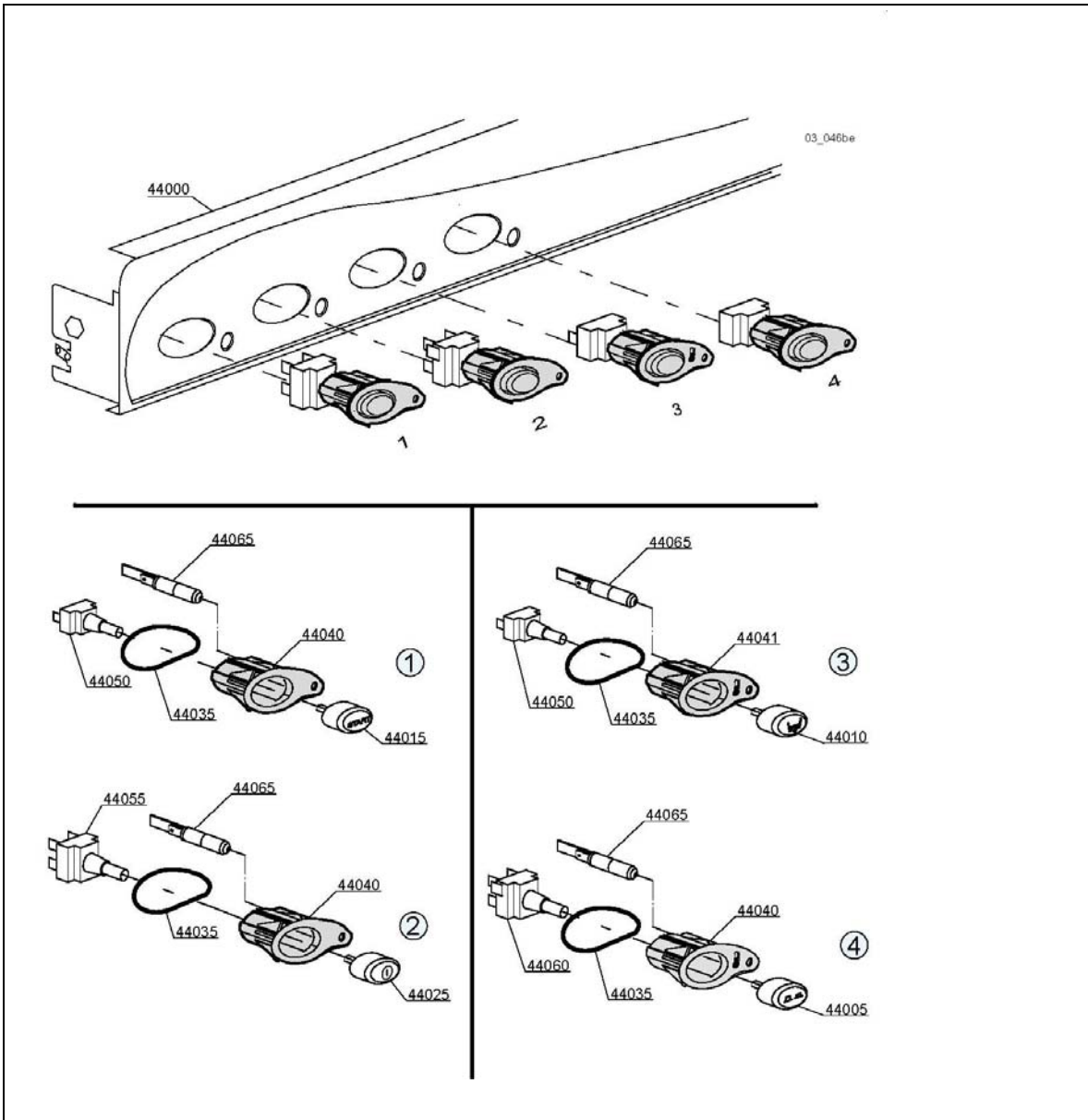


02\_302ke

ID	P- Code	DESCRIPTION
40100	510002	Door
40105	510018	Lower door
40110	150221	Right/left door rod
40115	135222	Hinge door seal
40120	11121	M4x8 screw minimum 20 pieces
40125	11706	M6 stainless steel nut min 20 pieces
40130	11721	M6 self-locking nut min 10 pieces
40135	11111	M6x6 stainless steel screw min 10 pcs

ID	P- Code	DESCRIPTION
40140	11168	M6x12 stainless steel screw
40145	510602	Bush
40150	510211	Stainless steel handle
40155	11703	M4 inox Plated nut
40160	11220	M4x4 screw
40165	10500007	Thermometer - UL ARTHERMO
40170	10500008	Gauge - UL ARTHERMO

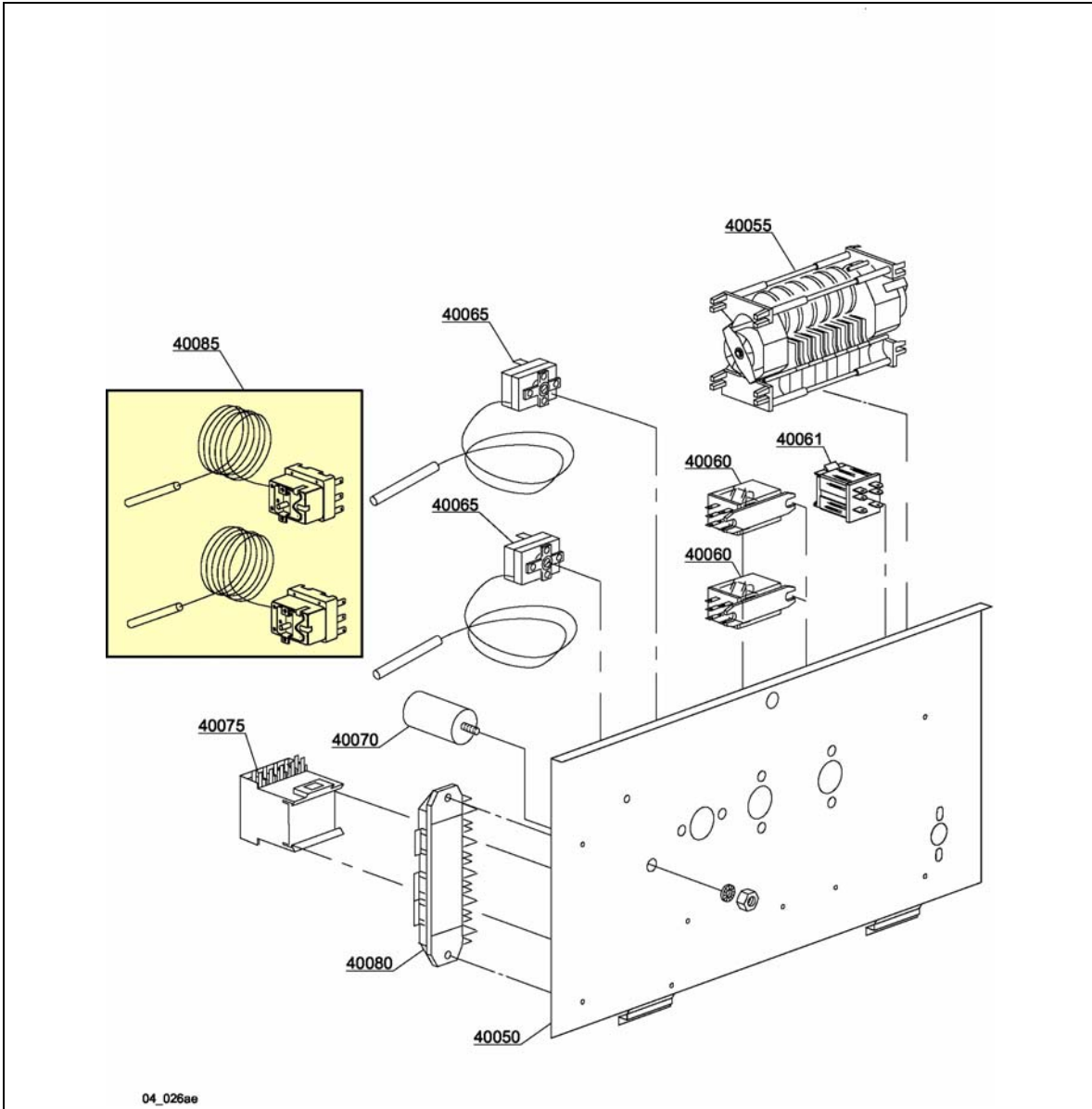
1.1.3. Control Panel



ID	P- Code	DESCRIPTION
44000	510013	Control panel
44005	89342	Time selector switch push button
44010	89343	Drain pump push button
44015	89341	Start push button
44025	89340	ON-OFF push button
44035	86006	OR 2100 O-ring
44040	86001	Push button support

ID	P- Code	DESCRIPTION
44041	86002	Temperature push button support
44050	15813	16A unipolar switch
44055	15812	16A bipolar switch
44055	15800	16A switch
44060	15811	16A bipolar switch
44060	15811A	16A bipolar switch
44065	15826	Pilot light 220V

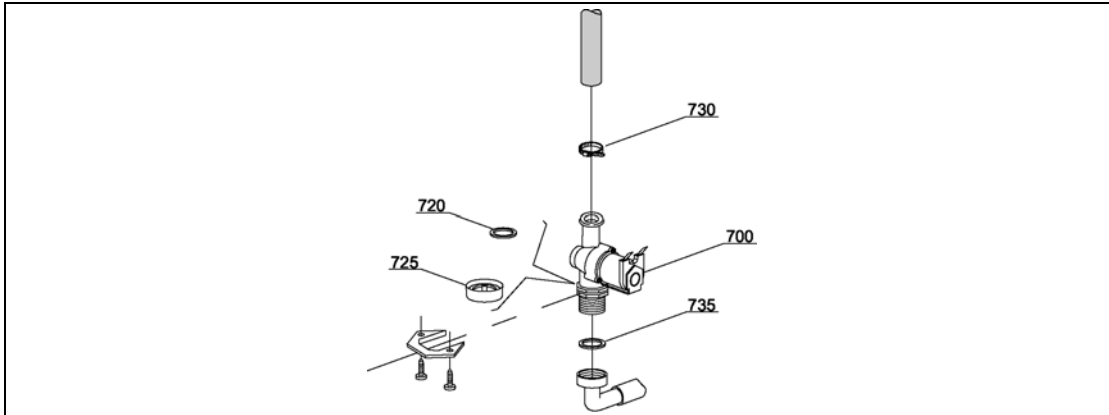
1.1.4. Control Components



ID	P- Code	DESCRIPTION
40050	510008	Electric component panel
40055	10823	120"/180" timer - 220Vac 60Hz
40060	560301	FINDER 16A bipolar relay
40061	560302	FINDER 16A bipolar relay in deviation

ID	P- Code	DESCRIPTION
40065	10707/1	0-90°C thermostat
40075	15086	Contactors 230V 50/60Hz
40080	500551	6 poles terminal board
40085	2000430	Security Thermostat 90/110

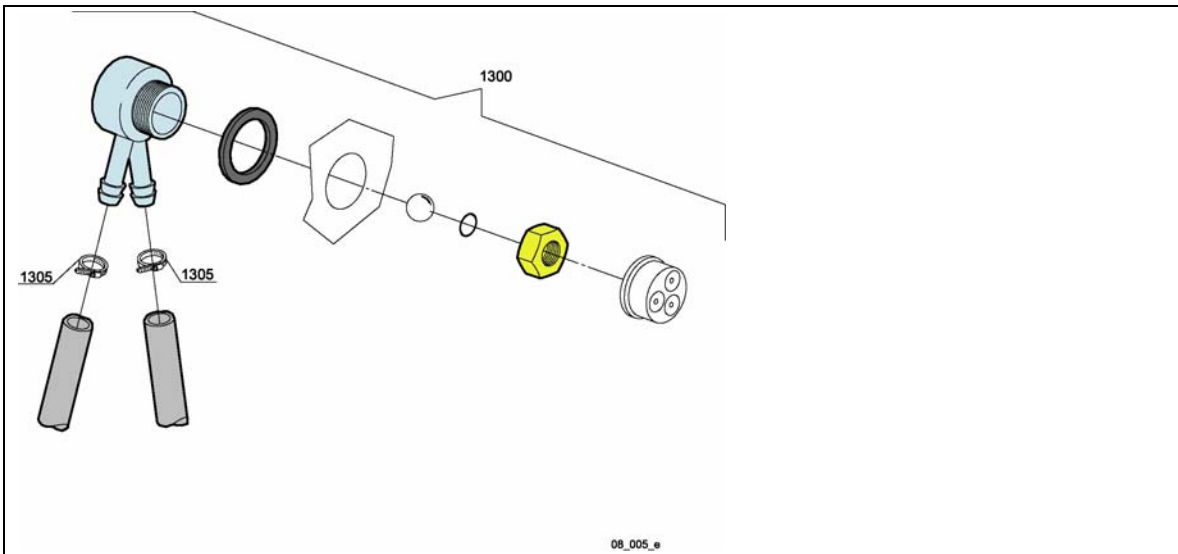
## 1.1.5. Solenoid Valve Group



ID	P- Code	DESCRIPTION
700	10703	Single solenoid valve - 230Vac
720	N.C.	Pressure reducing valve

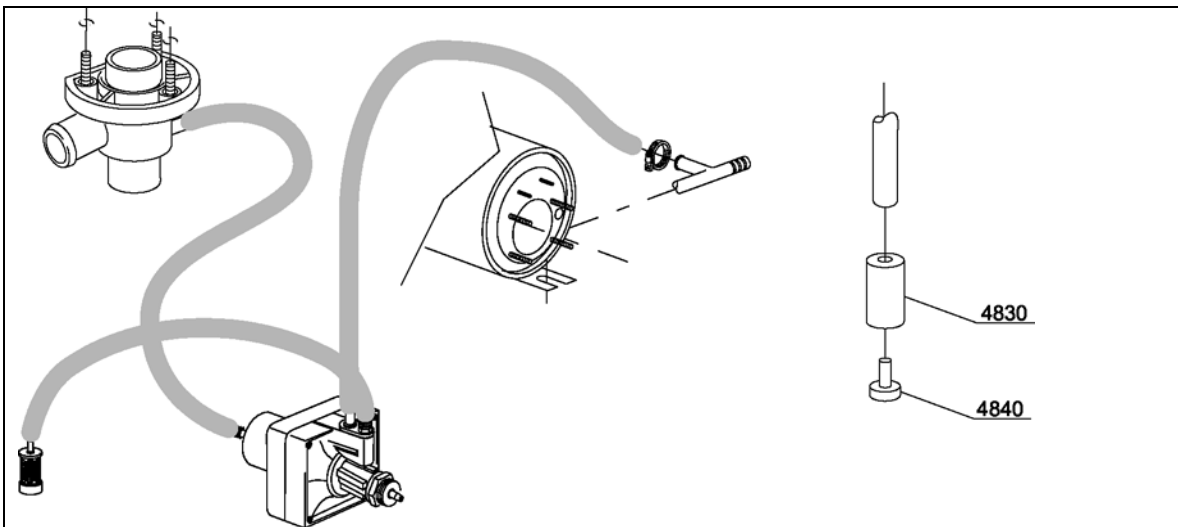
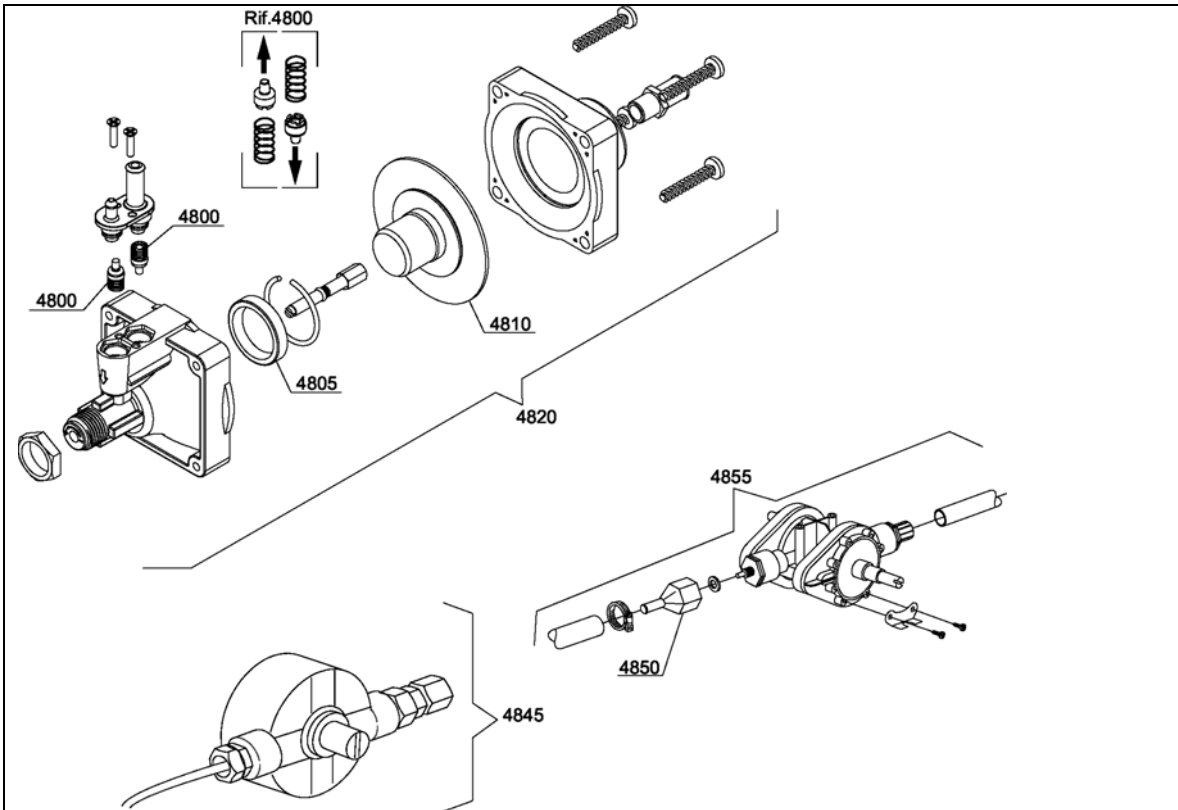
ID	P- Code	DESCRIPTION
730	11807	12/22 clamp (minimum 3 pieces)
735	13307	3/4 gasket

## 1.1.6. DVGW



ID	P- Code	DESCRIPTION
1300	999900006	DVGW assembly
1305	11807	12/22 clamp (minimum 3 pieces)

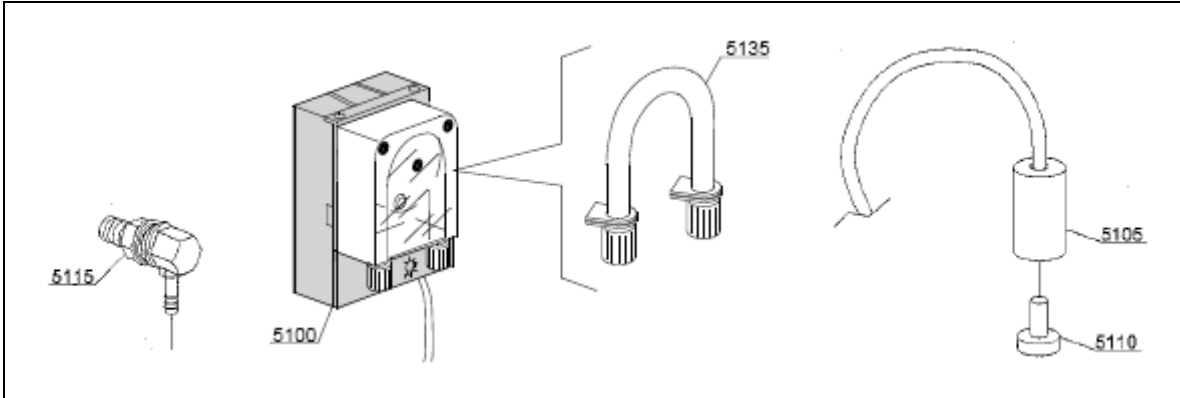
1.1.7. Rinse Aid Dispenser Group



ID	P- Code	DESCRIPTION
4800	10805	Tecnopro non return valve
4805	10806	D22 O-ring
4810	10807	Membrane

ID	P- Code	DESCRIPTION
4820	10799	Tecnopro rinse aid dispenser
4830	12525	Ballast
4840	15058	Small filter minimum 3 pcs

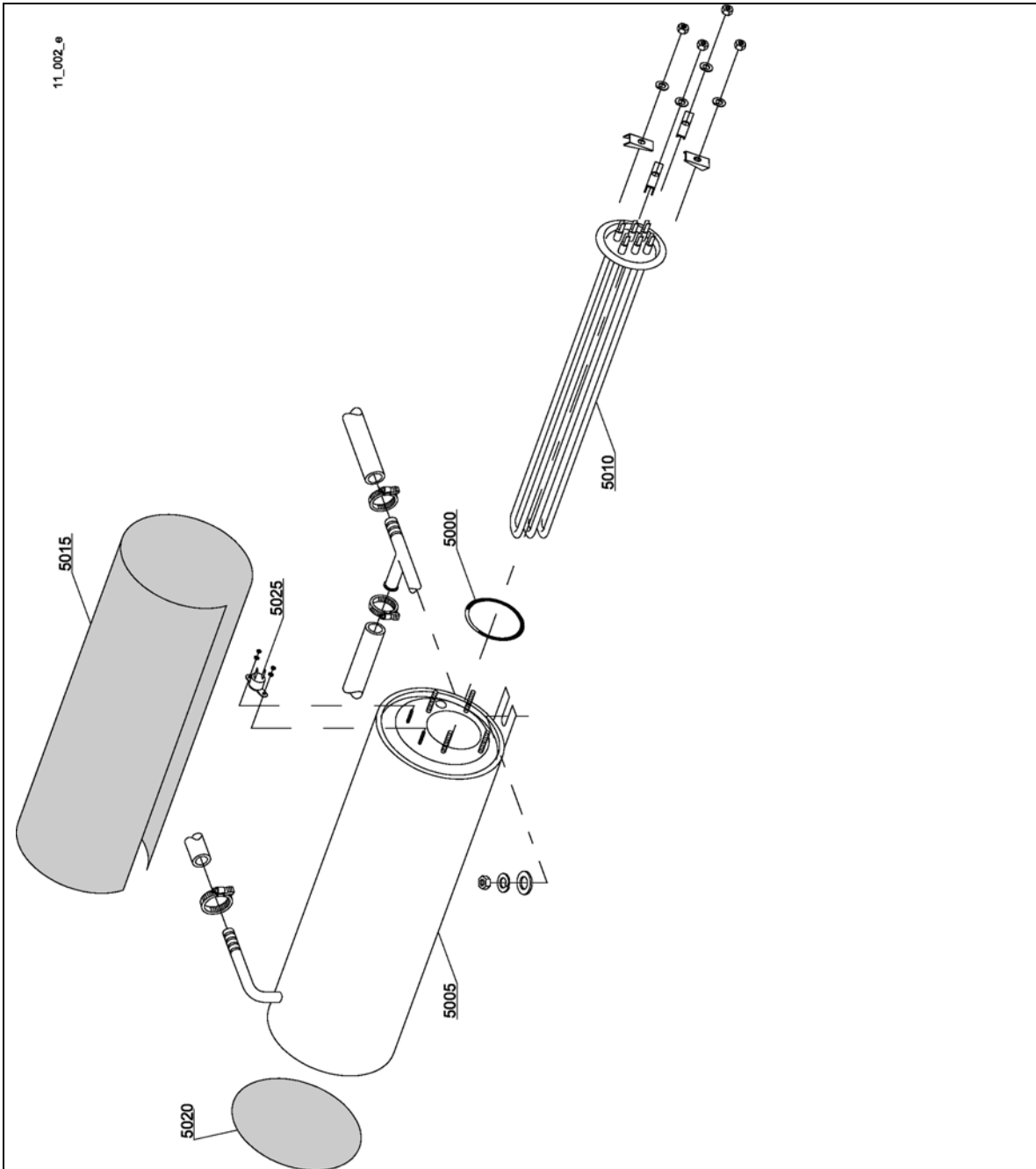
**1.1.8. Detergent Dispenser Group**



ID	P- Code	DESCRIPTION
5100	15985	Seco detergent pump
5105	12525	Ballast
5110	15058	Small filter

ID	P- Code	DESCRIPTION
5115	15123	Complete s/s injector
51135	15185	Seco thermo-plastic pipe

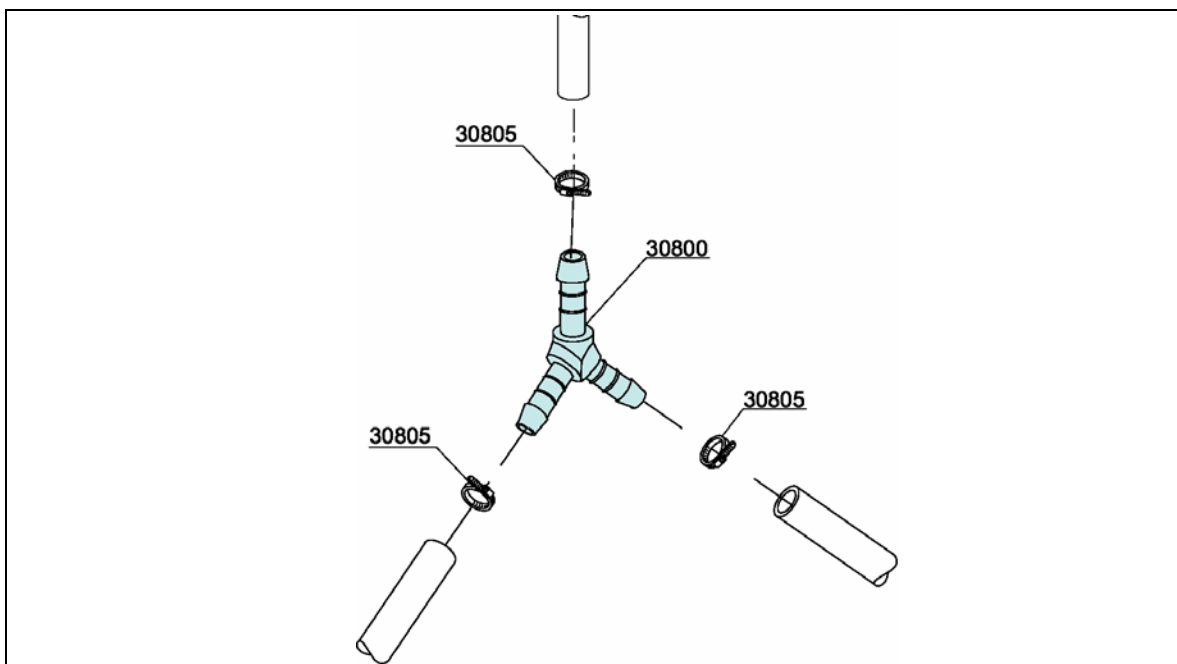
1.1.9. Boiler Group



ID	P- Code	DESCRIPTION
5000	13005	OR 151 NBR O-ring (minimum 5 pcs)
5005	150905	Boiler
5010	150891	6/6.53 KW 230/240V 3 heating element

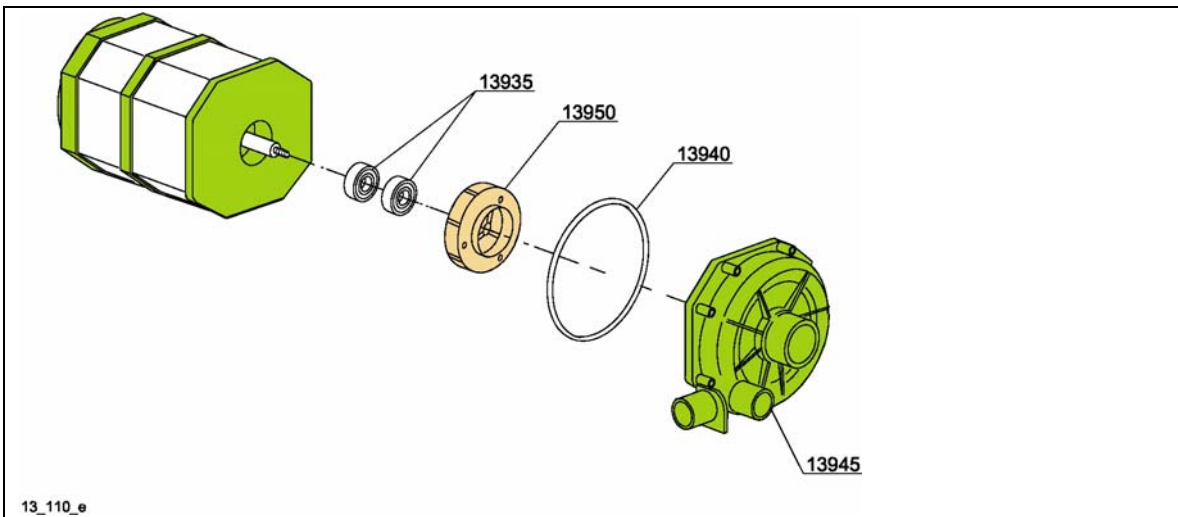
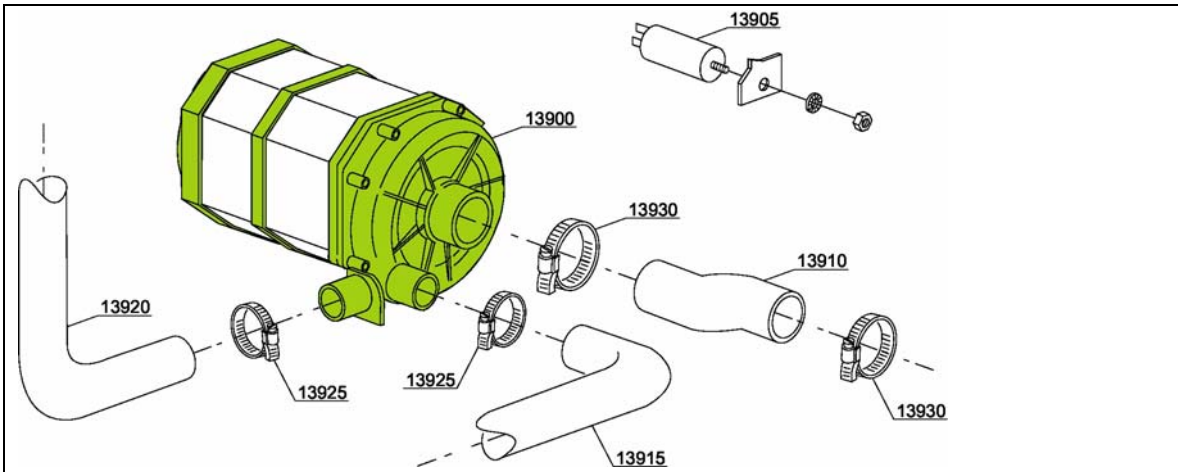
ID	P- Code	DESCRIPTION
5015	15066	Insulation boiler
5020	15205	D160 End piece (minimum 2 pieces)
5025	15550	Safety thermostat

1.1.10. 3 Ways Connection



ID	P- Code	DESCRIPTION
30800	540091	012 mm plastic 3 ways connection
30805	11807	12/22 clamp (minimum 3 pieces)

## 1.1.11. Wash Pump

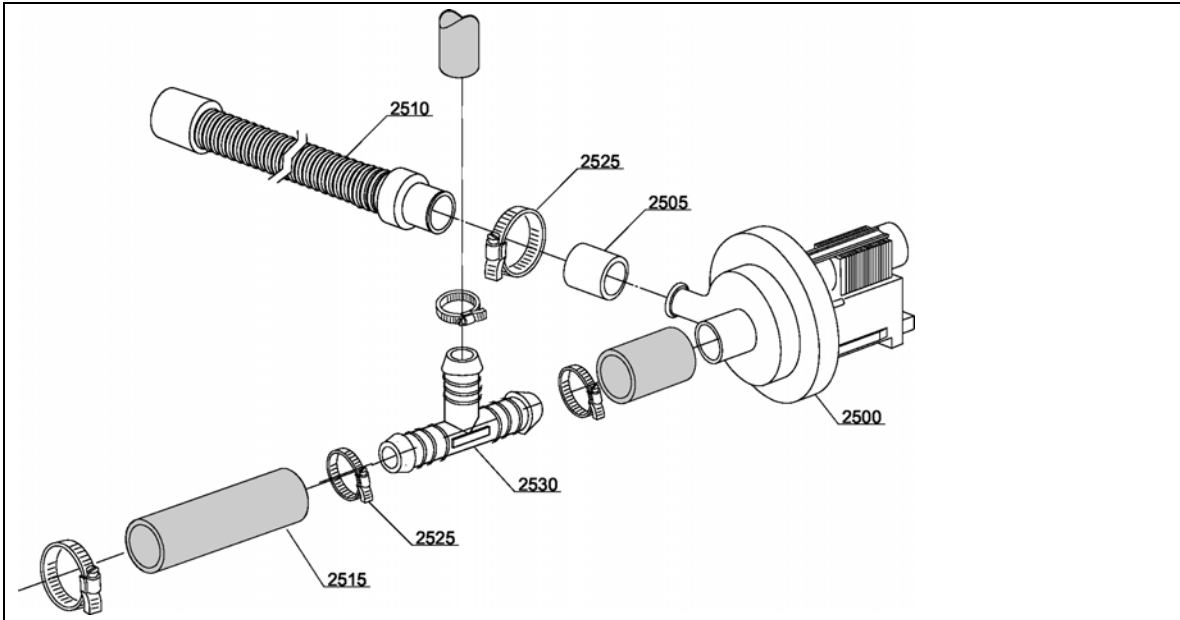


13\_110\_e

ID	P- Code	DESCRIPTION
13900	150918	0,75 Hp wash pump 220V / 240V 60Hz
13900	150933	0,70Hp wash pump - 230V 60Hz
13905	15081	R12,5 uF condenser
13910	25032/A	Suction pipe coupling
13915	150049	Lower wash pipe coupling
13920	150048/a	Wash ramp

ID	P- Code	DESCRIPTION
13925	11806	25/40 clamp (minimum 2 pieces)
13930	11809	30/45 clamp (minimum 2 pieces)
13935	15080	Rotating seals
13940	7130	OR pump O-ring (minimum 2 pcs)
13945	16182	Scroll
13950	15079/G	Pump rotor

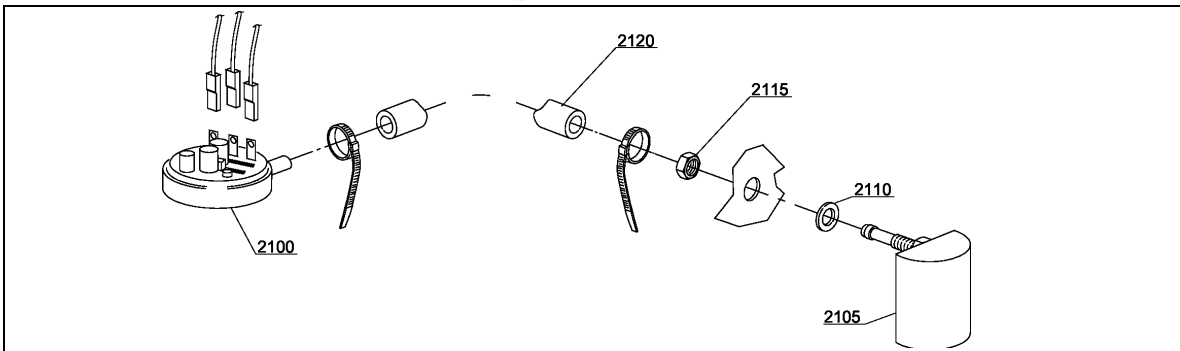
## 1.1.12. Drain Pump Group



ID	P- Code	DESCRIPTION
2500	15101/E	Drain pump 230V 60Hz (UL)
2505	15101/D	Pipe fitting (minimum 3 pieces)
2510	10727	Drain pipe

ID	P- Code	DESCRIPTION
2515	18044	028 top wash pipe
2525	11806	25/40 clamp (minimum 2 pieces)

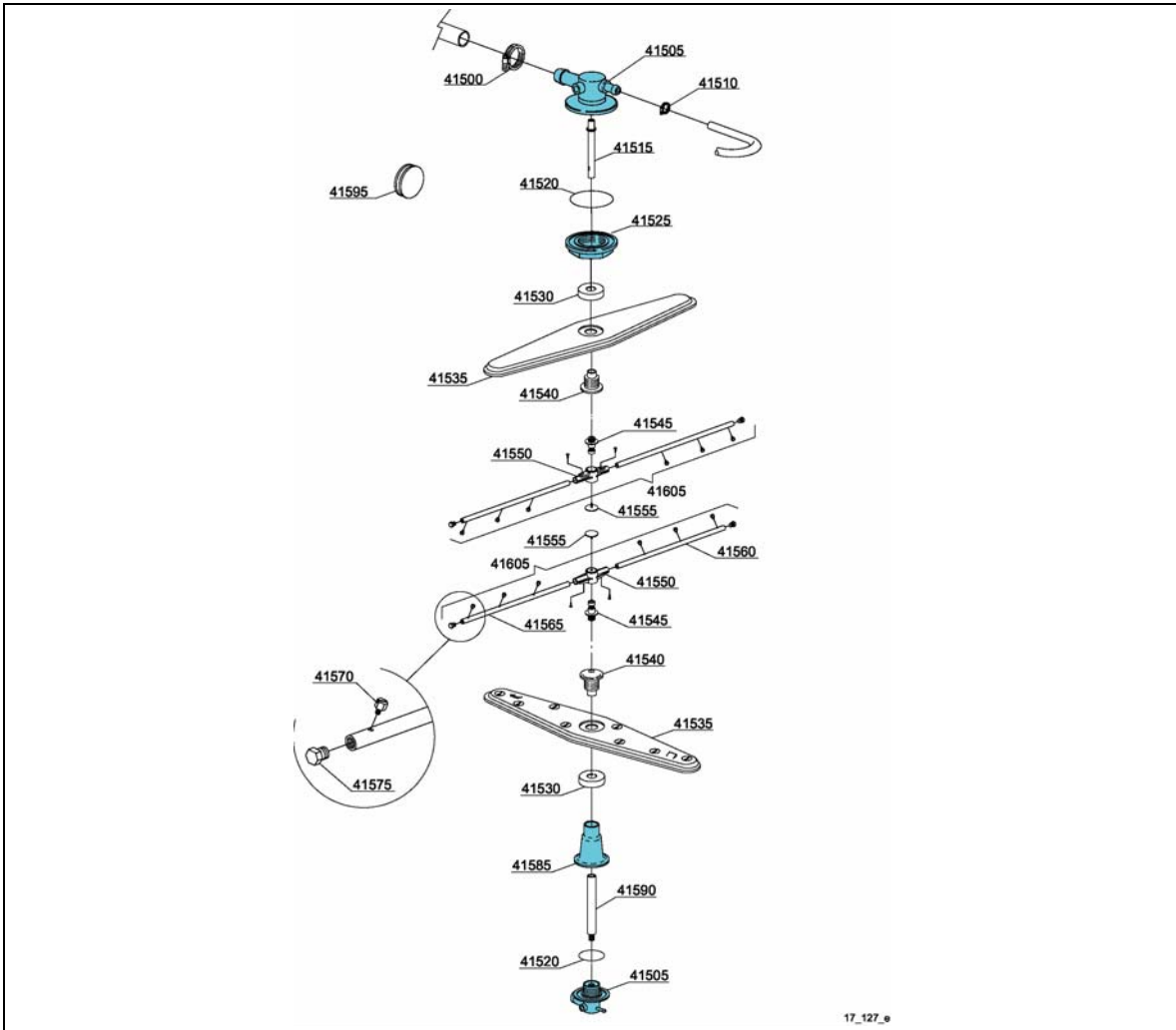
## 1.1.13. Pressure Switch Group



ID	P- Code	DESCRIPTION
2100	10706/A	47-27 pressure switch
2105	135911/B	Grey air trap assembly
2110	13301	O-ring (minimum 10 pcs) D14x8x1,5

ID	P- Code	DESCRIPTION
2115	11702	M8 stainless steel nut (minimum 10 pcs)
2120	14508	4,5X9 EPDM rubber hose (minimum 2mt)

## 1.1.14. Turret Group



17\_127\_e

ID	P- Code	DESCRIPTION
41500	11806	25/40 clamp (minimum 2 pieces)
41505	500612	Top/lower turret
41510	11807	12/22 clamp (minimum 3 pieces)
41520	13015	6225 OR 160 NBR O-ring (min 5 pcs)
41525	500623	Ring nut for fixing turret
41535	500700	Stainless steel wash rotor
41540	500701	Hub for rotor (inox rinse arm)
41545	10651	Rinse axle
41550	10650	Rinse arm
41555	10652	Rinse arm screw

ID	P- Code	DESCRIPTION
41560	10657	Right rinse arm - stainless steel nozzle
42860	10658	Left rinse arm - stainless steel nozzle
41570	560018	Stainless steel rinse nozzle
41575	560017	Rinse arm plug
41580	550220	Hub rotor/pipe coupling spacer
41585	550225	Lower pipe coupling
41590	500704	Rinse lower distributor connection axle
41595	13316/A	DVGW hole O-ring
41605	75918	Top/lower rinse arm complete