

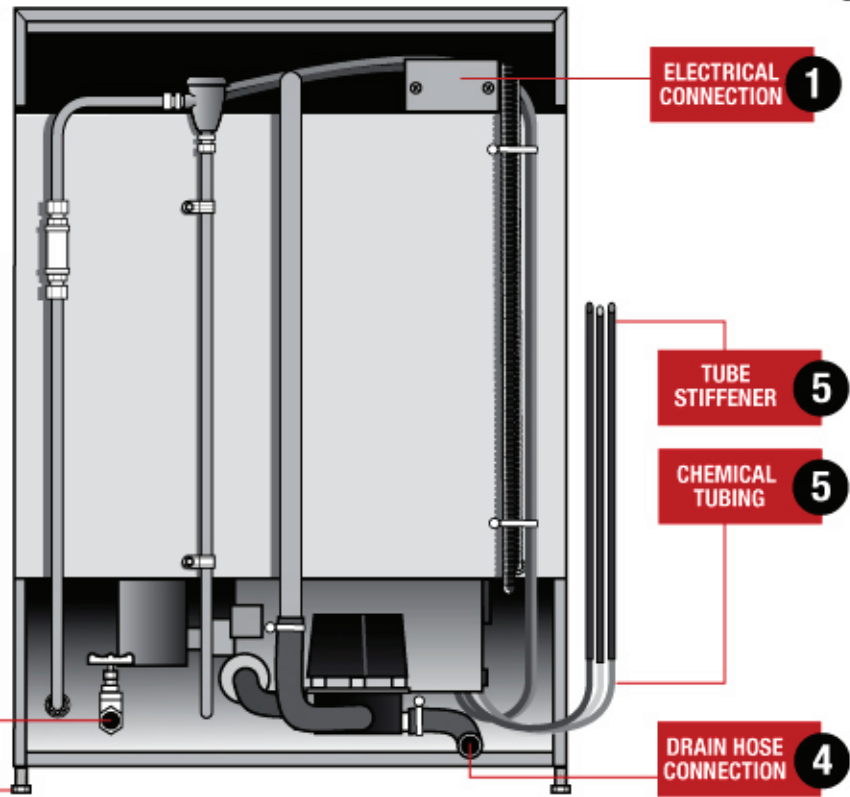
L-1X16 / L-1X

Quick Setup Instructions

WARNING: Electrical and plumbing connections need to be made by a licensed service person and comply with all Federal, State and Local Health, Electrical, Plumbing and Safety codes.



REAR VIEW



2 1/2" WATER INLET

3 LEVELING LEGS

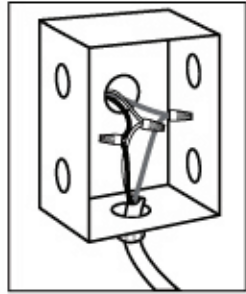
1 ELECTRICAL CONNECTION

5 TUBE STIFFENER

5 CHEMICAL TUBING

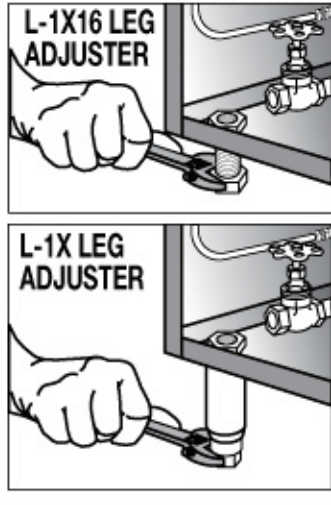
4 DRAIN HOSE CONNECTION

STEP 1



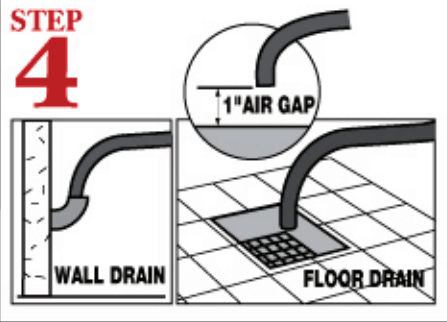
Connect hard wire power supply to power box. 110/120V. 60HZ and ground.

STEP 3



Level dishmachine by adjusting leveling legs. Dishmachine must be level front and back to ensure proper performance.

STEP 4



Connect the drain hose to wall or floor drain. The floor drain must have a 1 inch air gap between drain hose and floor drain.

STEP 5



Insert tube stiffener with chemical tubing into corresponding chemical dispensers.

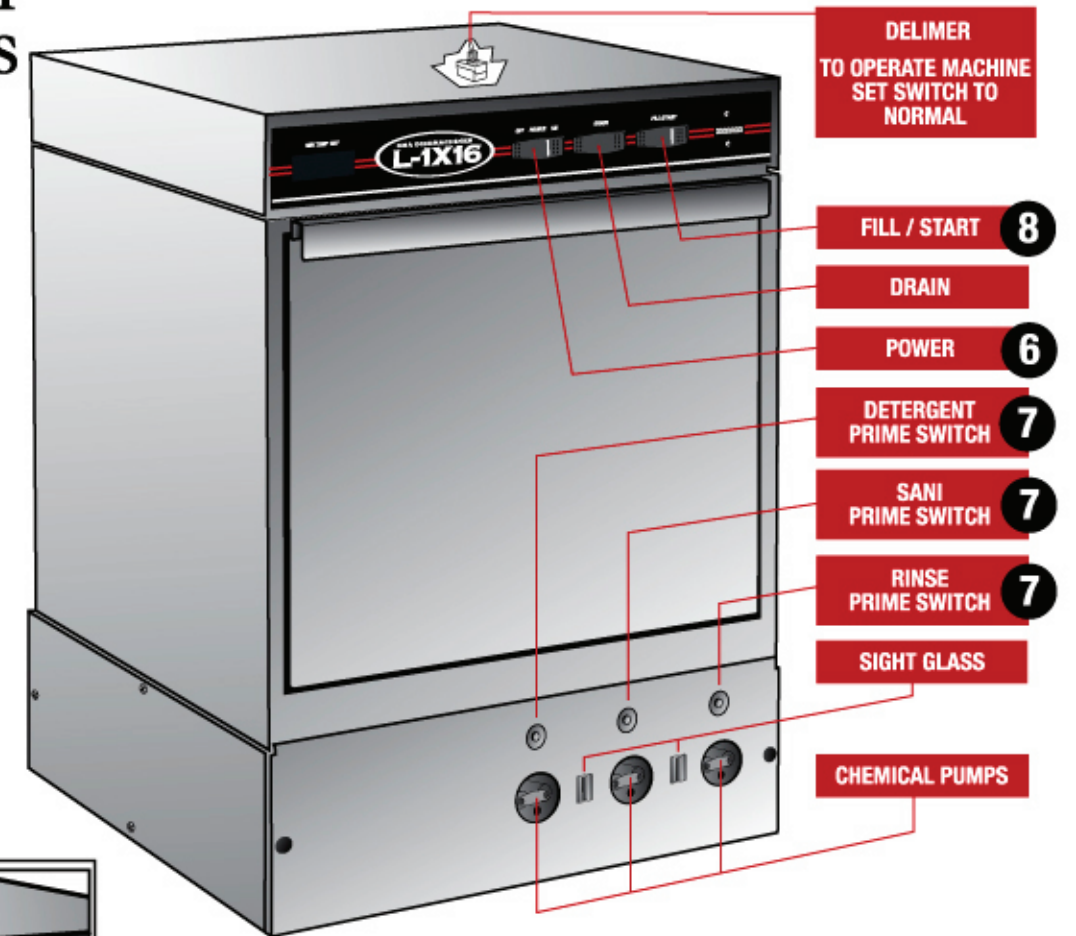
L-1X16 / L-1X

Quick Setup Instructions

WARNING: Electrical and plumbing connections need to be made by a licensed service person and comply with all Federal, State and Local Health, Electrical, Plumbing and Safety codes.



FRONT VIEW



DELIMER TO OPERATE MACHINE SET SWITCH TO NORMAL

8 FILL / START

DRAIN

6 POWER

7 DETERGENT PRIME SWITCH

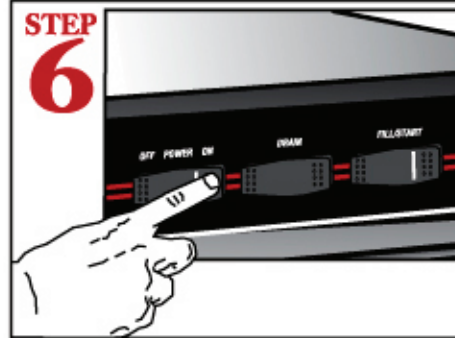
7 SANI PRIME SWITCH

7 RINSE PRIME SWITCH

SIGHT GLASS

CHEMICAL PUMPS

STEP 6



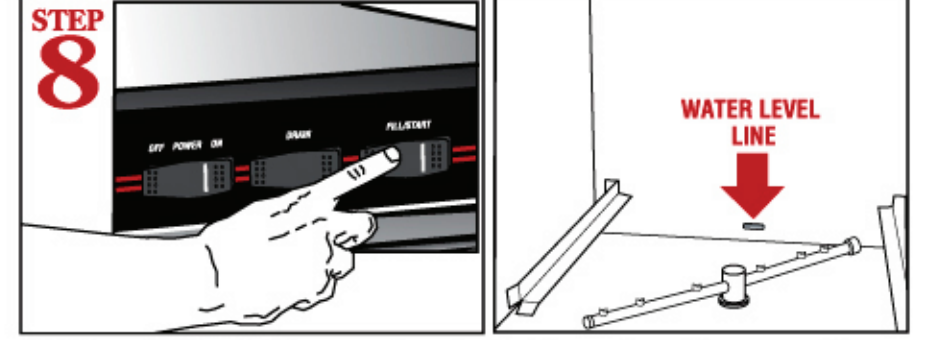
Turn power switch to "ON" position.

STEP 7



Press and Hold down "SANI", "DETERGENT" and "RINSE" switches to prime chemicals. This step must be repeated each time chemical containers are changed.

STEP 8



Hold down "FILL" switch for approximately 10 - 15 seconds to allow water to flow into the dishwasher. Water should reach "WATER LEVEL LINE" which is located inside at the back of the wash tank. Close door, then press "START" switch.

